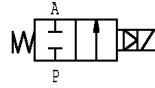
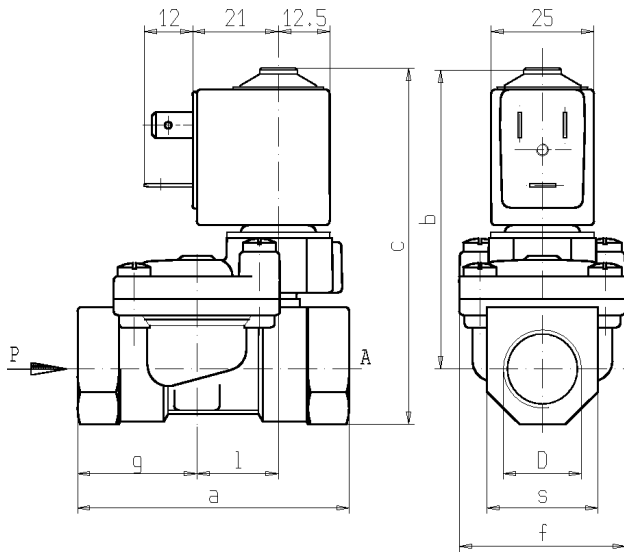




SOLENOID VALVE
2/2 - NC (Normally closed)
Pilot operated
G 3/8 ÷ G1

L180



D	a	b	c	e	f	g	m	n	l	s
G 3/8	60	71	82	25	40	25,5	21	12,5	20	22
G 1/2	66	73,5	87	25	40	29	21	12,5	20	27
G 3/4	79	79,5	96	25	50	35,5	21	12,5	24,5	33
G 1	105	93	114	25	71	46	21	12,5	28	42

► GENERAL FEATURES

Diaphragm valve, pilot operated, having full orifice.
 Suitable to shut off liquid and gaseous fluids (verify the compatibility of fluid with materials in contact).

► TECHNICAL FEATURES

Maximum allowable pressure (PS) 20 bar
Opening time from ~300ms to ~1500ms
Closing time from ~1000ms to ~2000ms
Fluid temperature -10°C +90°C (NBR)
 0°C +130°C (FPM)
Max viscosity 5°E (~37 cStokes or mm²/s)

► MATERIALS IN CONTACT WITH FLUID

Body Brass
Sealing NBR or FPM
Internal components Brass and stainless steel
Seat Brass
Guide assembly Stainless steel
Shading ring Copper

► COIL

Continuous duty ED 100%
Encapsulation material PET (polyethylene terephthalate) fiberglass reinforced.
Coil insulation class F (155 °C) on request class H (180°C) - UL
Ambient temperature -10 °C +60 °C
Electric connenctions DIN 46340 - 3 poles connector
Protection degree IP 65 (EN 60529) with plug connector
Voltages DC 12-24V (+10% -5%)
 AC 24V/50-60Hz - 110V/50-60Hz (120V/60Hz) -
 230V/50-60Hz (+10% -15%)
 (Other voltages and frequencies on request).

Port size ISO 228	Orifice size (mm)	Differential pressure (bar)				Kv (m³/h)	Series and type			Power absorption			Sealings	Notes	Weight (kg)	
		Δp min	Δp max				Valve	Valve with manual override	Coil	AC (VA)		DC (W)				
			Gases		Liquids					Inrush	Holding					
			AC	DC	AC											DC
3/8	11,5	0,35	12 (10)	12 (10)	12 (10)	12 (10)	1,7	L180(*)17	L180(*)18	Z610A	16	10	6	(*) = B (NBR)	1 - 2	0,370
1/2	13,5		16 (12)	16 (12)	16 (12)	16 (12)	3,8	L180(*)31	L180(*)32							
3/4	18		12 (10)	12 (10)	12 (10)	12 (10)	5	L180(*)17	L180(*)18							
1	24		12 (10)	12 (10)	12 (10)	12 (10)	11	L180(*)17	L180(*)18							

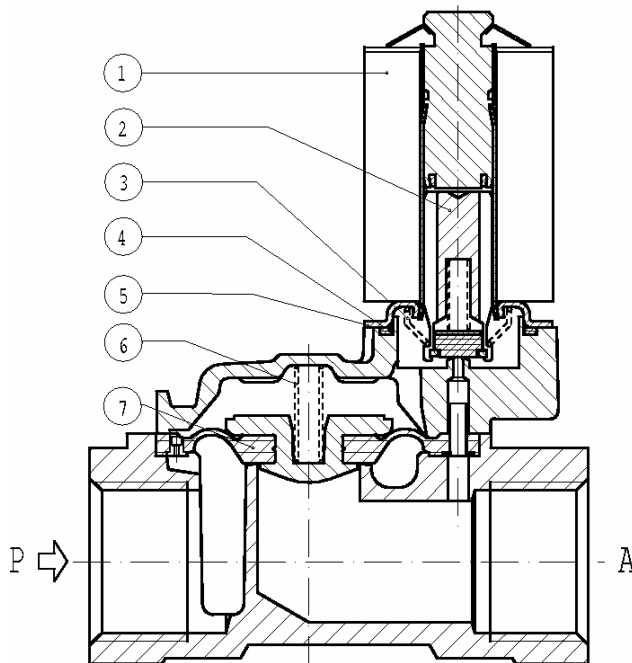
► NOTES

- Sealings: B(NBR)=Nitrile-butylene elastomer V(FPM)=Fluoro-carbon elastomer Q(NBR)= WRAS approved nitrile-butylene elastomer.
- Operation with gaseous media, at high pressure without any outlet restriction, can reduce the diaphragm life.
- 1 - The bracketed values of Δp max are related to valves with V(FPM) seals.
- 2 - L180Q17 - L180Q18 - L180Q31 - L180Q32 WRAS homologated solenoid valves.

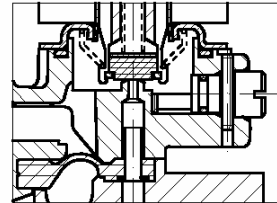
L180

► SPARE PARTS

L180 B-V-Q 17-31



L180 B-V-Q 18-32



Kit description

Kit P.N.

Consisting of:

Core kit	L180B.. L180V.. L180Q..	G2937301 G2937303 G2937304	Core pos. 2 Core return spring pos. 3 OR guide assembly pos. 4
Core return spring kit		G2927101	N. 10 core return springs pos.3
Spring on diaphragm kit	G 3/8 G 1/2 G3/4 G1	G2424101 G2831901 G1844501 G2380201	N. 10 springs on diaphragm pos. 6
OR guide assembly kit	L180B.. L180V.. L180Q..	GU2421000017 GU2424000017 GU2436000017	N. 10 OR guide assembly pos. 4
Diaphragm assembly	G 3/8 B17-B18 G 1/2 B31-B32 G3/4 B17-B18 G1 B17-B18 G 3/8 V17-V18 G 1/2 V31-V32 G3/4 V17-V18 G1 V17-V18 G 3/8 Q17-Q18 G 1/2 Q31-Q32 G3/4 Q17-Q18 G1 Q17-Q18	2782501R 2844302R 2299701R 2380101R 2782502R 2844303R 2299702R 2380102R 2782507R 2844301R 2299707R 2380104R	Diaphragm assembly pos. 7
Guide assembly		2593201R	Guide assembly pos. 5
Coil		Z610A	Coil pos. 1

► MOUNTING

- Solenoid valve can be mounted in any position; vertical with coil upwards preferred.